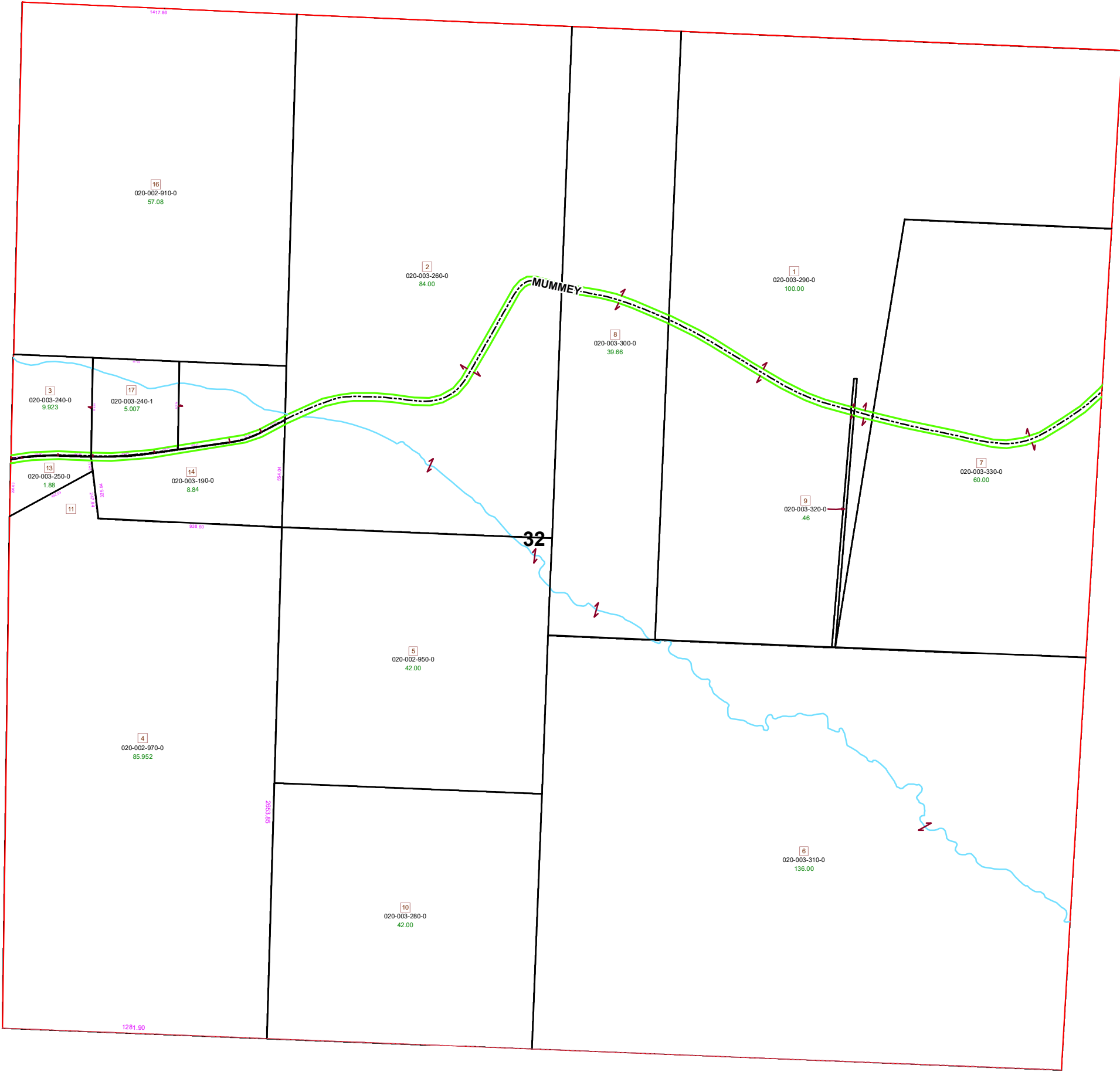


# BRISTOL TOWNSHIP SECTION 32 R 11 TWP 11 MORGAN COUNTY, OH



PIN	VOL	PAGE	Owner	LegalDescr	Acres
020-002-910-0	OR55	214	HANCHER CARLOS W & BETTY A TRUST	R11 T11 S32 SD 16 S	57.08
020-003-240-1	OR234	28	MARSHALL CHARLES E	R11 T11 S32 SD17	5.007
020-003-280-0	OR219	3123	OHIO FRANKLIN REALTY LLC	R11 T11 S32 SD 10 B	42
020-003-310-0	OR219	3123	OHIO FRANKLIN REALTY LLC	R11 T11 S32 SD 6 M	136
020-003-320-0	OR219	3123	OHIO FRANKLIN REALTY LLC	R11 T11 S32 SD 9 M	0.46
020-003-330-0	OR219	3123	OHIO FRANKLIN REALTY LLC	R11 T11 S32 SD 7 E	60
020-003-290-0	OR219	3123	OHIO FRANKLIN REALTY LLC	R11 T11 S32 SD 1 E	100
020-003-300-0	OR219	3123	OHIO FRANKLIN REALTY LLC	R11 T11 S32 SD 8 M	39.66
020-003-260-0	OR219	3123	OHIO FRANKLIN REALTY LLC	R11 T11 S32 SD 2 W	84
020-003-190-0	OR215	2489	PARSONS TYLER	R11 T11 S32 SD 14	8.842
020-003-240-0	OR232	4889	W & E PROPERTIES LLC	R11 T11 S32 SD 3	9.923
020-002-950-0	OR232	5372	YODER MARTIN & NIVA	R11 T11 S32 SD 5	42
020-002-970-0	OR232	3214	YODER MARTIN M & NIVA A	R11 T11 S32 SD 4-11	85.952
020-003-250-0	OR232	1260	YODER MARTIN M & NIVA A	R11 T11 S32 SD 13 R	1.88

**Boundaries**

— Hydro    — ROW

**Type**

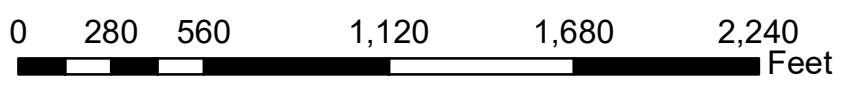
— Lot      — Section

— County   — Parcel   - - - Township

                 — Roads

 Bristol Sections

Source: Morgan County Engineer's Office  
 Author: Marcia Wolfe  
 Date: 6/4/2020



Disclaimer: The information that these maps contains is for reference purposes only. Please bring any erros to the attention of the Engineer's Office staff.  
 Thank you